

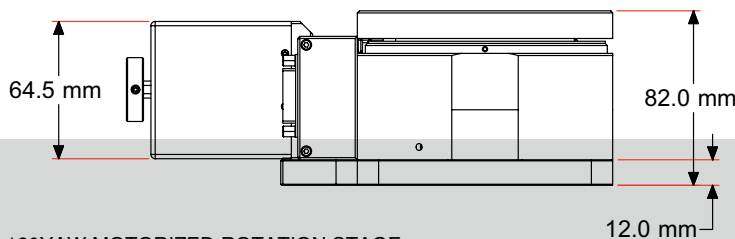
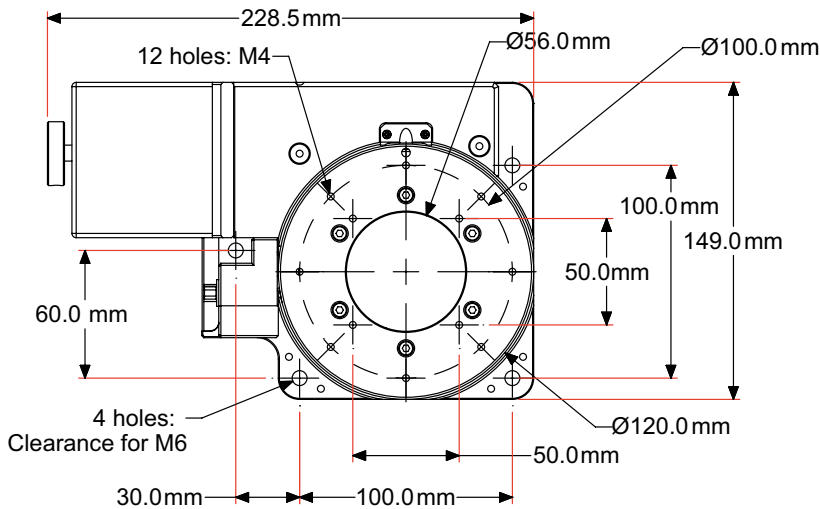
## KST Precision Motorized Rotation Stages

- High load capacity
- High stiffness
- Angular repeatability less than 0.01°
- 5-phase stepper motor for easy setup and compatibility with our SHOT-200 and SHOT300 series controllers.

- Piezo Stages
- Linear Stages
- Rotation Stages
- ZF Stages
- Motorized Optics Holders
- Goniometers
- GS Closed Loop Stages
- Controllers & Drivers
- Cables & Accessories
- Software



Part No. 513-2120

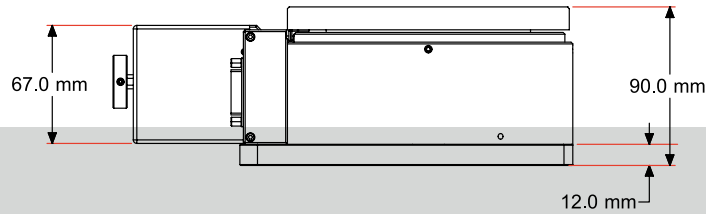
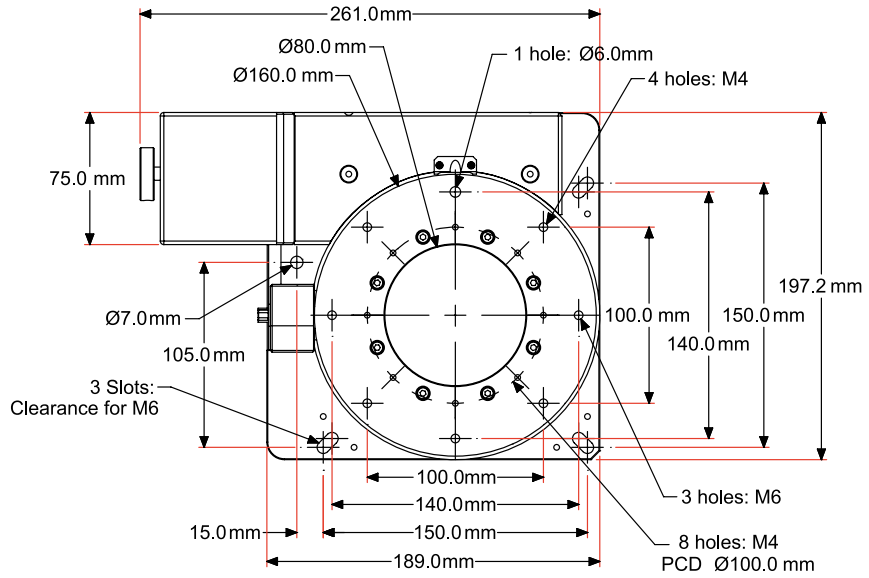


KST-120YAW MOTORIZED ROTATION STAGE

ORDERING  
&  
TECHNICAL SUPPORT  
(949) 851-5881  
FAX (949) 851-5058  
E-MAIL  
sales@optosigma.com  
WEB  
www.optosigma.com



Part No. 513-2120



KST-160YAW MOTORIZED ROTATION STAGE

Specifications & Tolerances

Dimensions:	±0.2mm
Max travel speed:	30 degrees/sec
Positional Repeatability:	<0.01 degrees
Position accuracy:	<0.06 degrees
Backlash:	<0.01 degrees
Wobble:	<0.01mm

KST Precision Motorized Rotation Stages

Table Size	Axis	Load Capacity (kg)	Weight (kg)	Price	Model Number	PART NUMBER
------------	------	--------------------	-------------	-------	--------------	-------------

120mm	1	35	5		KST-120YAW	513-2120
160mm	1	40	8.5		KST-160YAW	513-2160

ORDERING & TECHNICAL SUPPORT  
 (949) 851-5881  
 FAX (949) 851-5058  
 E-MAIL sales@optosigma.com  
 WEB www.optosigma.com

