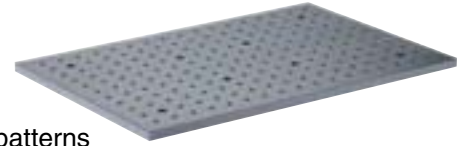


Optical Baseplates

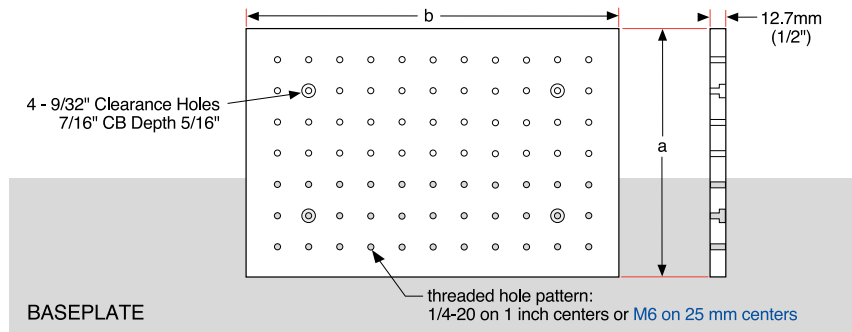
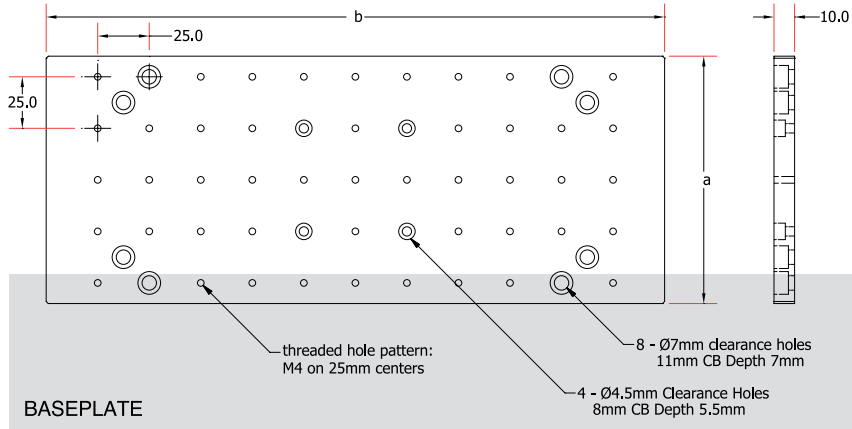


- Solid aluminum baseplates
- Standard 1/4-20 (M6) on inch (25mm) center hole patterns
- Black anodized
- New Metric baseplates with M4 on 25mm centers

Specifications & Tolerances

Thickness: 12.7mm (0.5")
 Dimensions: ±0.25mm (0.01")
 Surface flatness: ±0.0005" per inch

Material: Aluminum
 Finish: Black anodized
 Hole pattern: Inch, 1/4-20 on 1" centers metric, M6 on 25mm centers, M4 on 25mm centers



Optical Baseplates

INCH

METRIC

Dimensions		Price	PART NUMBER	PART NUMBER
(inches) a x b	(mm) a x b			
4.72 x 6.30	120 x 160		-	145-1104
4.72 x 11.81	120 x 300		-	145-1114
7.87 x 11.81	200 x 300		-	145-1124
8 x 8	203 x 203		145-1110	145-1115
8 x 12	203 x 305		145-1120	145-1125
12 x 12	305 x 305		145-1130	145-1135
12 x 18	305 x 457		145-1140	145-1145
12 x 24	305 x 610		145-1150	145-1155
18 x 24	457 x 610		145-1160	145-1165
Optical Baseplate Angle Brackets				
5 x 12	127 x 305		145-1180	145-1185

ORDERING
 &
 TECHNICAL SUPPORT
 (949) 851-5881
 FAX (949) 851-5058
 E-MAIL
 sales@optosigma.com
 WEB
 www.optosigma.com

