

Retro-reflector Holders

- Simple to align and hold
- For most common size retro-reflectors
- Can be post or direct mounted

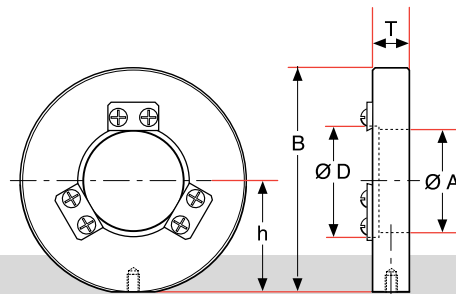


Retro-reflectors are some of the most difficult components to support and align. With the face perpendicular to the optical axis there is no clear reference surface. These holders make it simple to hold and align retro-reflectors. Once mounted in these rings they may be treated like any other component. Individual holders are offered for each of the most common diameters. The base of the holders are threaded 8-32 or M4 for inch or metric post or pedestal base mounting.

Specifications & Tolerances

Dimensions: ±0.2mm Material: Aluminum
 Finish: Black anodized

Product No.	Dimensions (mm)				
	h	A	B	D	T
113-0000/0005	20.0	8.0	41.0	10.0	10.0
113-0010/0015	20.0	10.0	41.0	12.7	10.0
113-0020/0025	20.0	12.0	41.0	15.0	10.0
113-0030/0035	25.0	17.0	51.0	20.0	10.0
113-0040/0045	25.0	22.0	51.0	25.0	10.0
113-0050/0055	25.0	22.0	51.0	25.4	10.0
113-0060/0065	30.0	27.0	61.0	30.0	10.0
113-0070/0075	40.0	45.0	81.0	50.0	10.0



RETRO-REFLECTOR HOLDER

Retro-reflector Holders

To Hold Retro-reflector Diameter, D		Price	PART NUMBER	
(inches)	(mm)		INCH	METRIC
0.39	10.0		113-0000	113-0005
0.50	12.7		113-0010	113-0015
0.59	15.0		113-0020	113-0025
0.79	20.0		113-0030	113-0035
0.98	25.0		113-0040	113-0045
1.00	25.4	113-0050	113-0055	
1.18	30.0	113-0060	113-0065	
1.97	50.0	113-0070	113-0075	

ORDERING & TECHNICAL SUPPORT
 (949) 851-5881
 FAX (949) 851-5058
 E-MAIL sales@optosigma.com
 WEB www.optosigma.com

