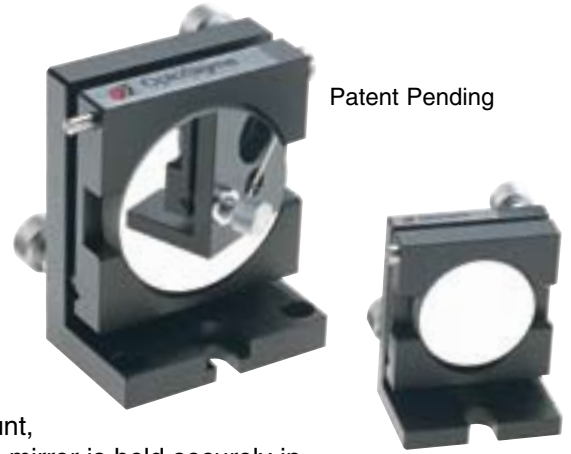


Mirror Mounts

- Optic Holders
- Optical Baseplates
- Optical Rails and Carriers
- Bases
- Rod Mounting Systems
- Post, Post Holders, Clamps

OneTouch™ Mirror Mounts

- Just press a button to remove or insert a mirror or filter
- Designed to prevent accidental touching of the front surface
- Sensitivity <math><2\text{arcmin}</math>



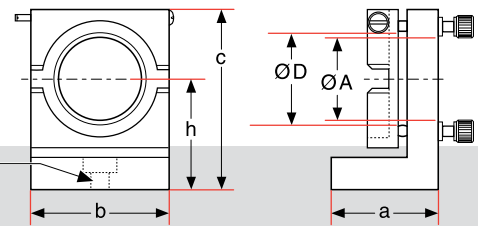
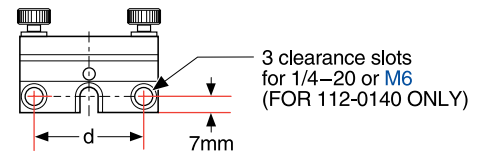
The OneTouch™ mirror mount is one of the simplest and most convenient mirror mounts ever made. Simply touch the spring-loaded button on the side of the mount, insert the mirror, release the button and the mirror is held securely in an adjustable mount. To remove the mirror, reverse the procedure. Cut-outs in the side of the mirror mount make it possible to avoid touching the mirror surface. A slight non-circularity in the mounting aperture ensures that the mirror is always kinematically seated and allows for a variation in diameter to accommodate both inch and metric diameters. The mirror surface is normally located above the slotted mounting hole. (This is useful if you need to rotate the mirror mount as the mirror surface will not move away from the beam during rotation.) Two additional 1/4 inch clearance mounting holes provide for permanent mounting when necessary. Fine pitch 100TPI (0.25mm) screws provide stable and controllable adjustment in two perpendicular axes of tilt.

Specifications & Tolerances

Dimensions: $\pm 0.2\text{mm}$
 Material: Aluminum
 Finish: Black Anodized

Angular adjustment:	Mirror diameter	20mm	1inch	30mm	2inch
Range		$\pm 3.5^\circ$	$\pm 2.4^\circ$	$\pm 2.4^\circ$	$\pm 1.4^\circ$
Angular adjustment per rotation		43arcmin	29arcmin	29arcmin	17arcmin
Sensitivity		1.5arcmin	1arcmin	1arcmin	30arcsec

Part No.	Dimensions (mm)						
	a	b	c	d	h	A	D
112-0110	30.0	30.0	40.0	20.0	25.0	10.0	20.0
112-0120	30.0	35.0	48.0	25.0	30.0	14.0	25.4
112-0130	28.0	40.0	50.0	30.0	30.0	16.0	30.0
112-0140	40.0	60.0	77.0	50.8	45.0	36.0	50.8



ONE TOUCH MIRROR MOUNT

OneTouch™ Mirror Mounts

To Hold Mirror Diameter, D (inches)	To Hold Mirror Diameter, D (mm)	Clear Aperture, A (mm)	Maximum Thickness (mm)	Center Height, h (mm)	Price	PART NUMBER
0.79	20.0	10.0	5.0	25.0		112-0110
1.00	25.0 or 25.4	14.0	5.0	30.0		112-0120
1.18	30.0	16.0	5.0	30.0		112-0130
2.00	50.0 or 50.8	36.0	8.0	45.0		112-0140

ORDERING & TECHNICAL SUPPORT
 (949) 851-5881
 FAX (949) 851-5058
 E-MAIL sales@optosigma.com
 WEB www.optosigma.com

