

Close-proximity Mirror Mounts

- Right and left hand models facilitate close positioning of mirrors
- Controls are out of the optical path
- For one inch and 30mm mirrors
- Full 360 degree rotation
- Fine adjustment micrometers
- Sensitivity $\lt; 2\text{arcmin}$

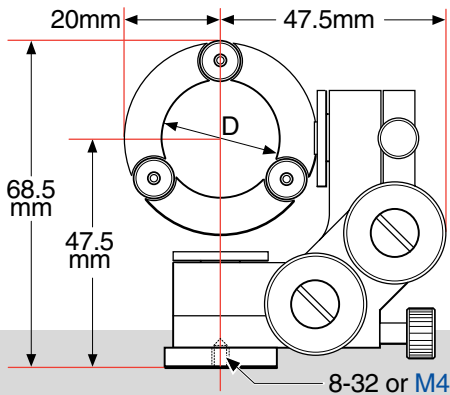
When it is necessary to mount two or more mirrors very close to each other these mounts provide the best solution. They are intended to be post or pedestal mounted so that the mirrors can be almost touching each other. The two adjusters are located to either side of the optical path where they do not interfere with the beam. Unclamped, the mirror can be rotated through a full 360 degrees about its surface. Once clamped fine movement is made by the micrometer adjusters over a range of ± 5 degrees. The mirrors are attached by means of small nylon clamp screws which hold them into a thin ring so that there is very little mount hardware in the region of the mirror. The base of the mount has an 8-32 or M4 threaded hole for attachment to a post or pedestal base.



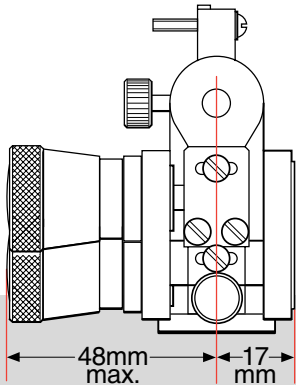
Specifications & Tolerances

Dimensions: $\pm 0.2\text{mm}$
 Material: Aluminum
 Finish: Black anodized
 Angular adjustment:

	Standard	Differential
Elevation Range	$\pm 8^\circ$	$\pm 8^\circ$
Azimuth Range	$\pm 5.5^\circ$	$\pm 5.5^\circ$
Per rotation	40arcmin	8.6arcmin
Sensitivity (1/2 div)	0.4arcmin	0.08arcmin



CLOSE-PROXIMITY MIRROR MOUNT (LEFT)



Close-proximity Mirror Mounts

INCH METRIC

To Hold Mirror Diameter (inches)	To Hold Mirror Diameter (mm)	Mirror to:	Price	PART NUMBER	PART NUMBER
Standard Micrometer Version					
1.00	25.4	Right		112-5560	112-5565
1.00	25.4	Left		112-5550	112-5555
1.18	30.0	Right		112-5580	112-5585
1.18	30.0	Left		112-5570	112-5575
Differential Micrometer Version					
1.00	25.4	Right		112-5591	112-5596
1.00	25.4	Left		112-5590	112-5595
1.18	30.0	Right		112-5593	112-5598
1.18	30.0	Left		112-5592	112-5597

ORDERING & TECHNICAL SUPPORT
 (949) 851-5881
 FAX (949) 851-5058
 E-MAIL sales@optosigma.com
 WEB www.optosigma.com

