

Beam Displacers

- Available with lateral beam displacements from 2 to 4mm
- Made from optical quality natural calcite
- Wide transmission range from 215nm to 2300nm
- Mounted in a metallic cell for protection and convenience

This simple calcite element separates the o-ray and the e-ray into two laterally displaced beams of orthogonal polarization.

These beam displacers are mounted in an aluminum cell for convenience in mounting.

Specifications & Tolerances

Dimensions: $\pm 0.2\text{mm}$

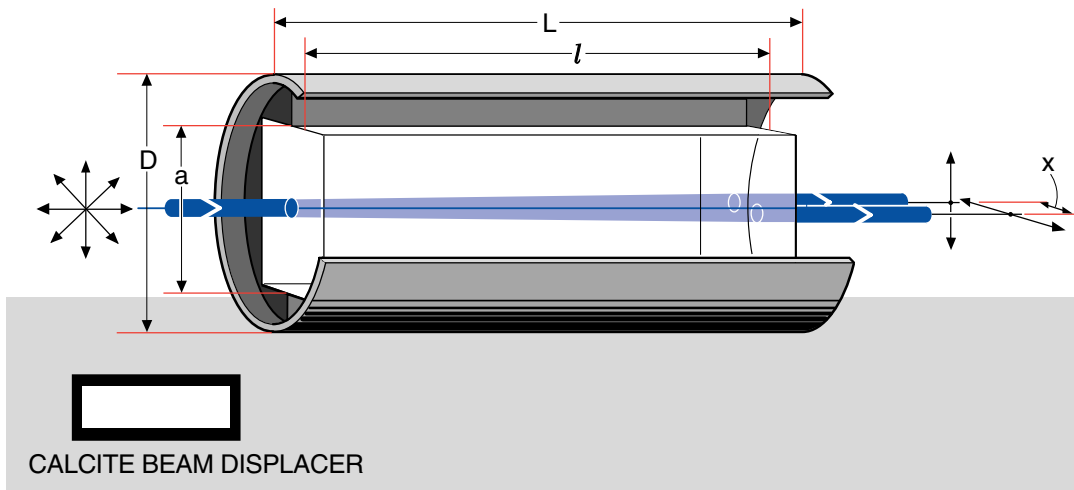
Surface quality: 40-20

Material: Optical quality natural calcite

Wavelength range: 215-2300nm

Cell: Black finished aluminum

Maximum power level: CW — $1\text{W}/\text{cm}^2$
Pulsed — $5\text{W}/\text{cm}^2$



Beam Displacers

CELL

Displacement, x (mm)	Side, a (mm)	Length, l (mm)	Diameter, D (mm)	Length, L (mm)	Price	PART NUMBER
2.0	5.0	19.0	15.75	22.0		066-5550
2.7	8.0	24.0	18.90	28.0		066-5560
3.3	10.0	30.0	22.00	35.0		066-5570
4.0	12.0	36.0	25.40	41.0		066-5660

Spherical Lenses
Cylindrical Lenses
Lens Kits
Achromatic Doublets
Multi-Element
Micro Optics
Mirrors
Prisms
Substrates & Windows
Beamsplitters
Polarizers
Filter & Apertures

ORDERING
&
TECHNICAL SUPPORT
(949) 851-5881
FAX (949) 851-5058
E-MAIL
sales@optosigma.com
WEB
www.optosigma.com

